



Università
degli Studi
di Palermo

TLC - CIMDU
Teaching and Learning Centre
Centro per l'innovazione e
il miglioramento
della didattica universitaria

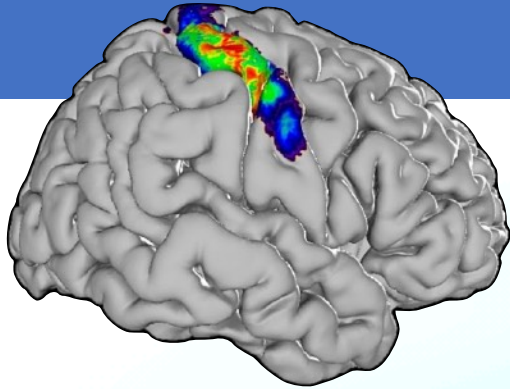
Phineas Gage: Understanding The Neurophysiological Basis Of Behavior Through 5G-Enhanced Immersive Learning

Giuseppe Giglia

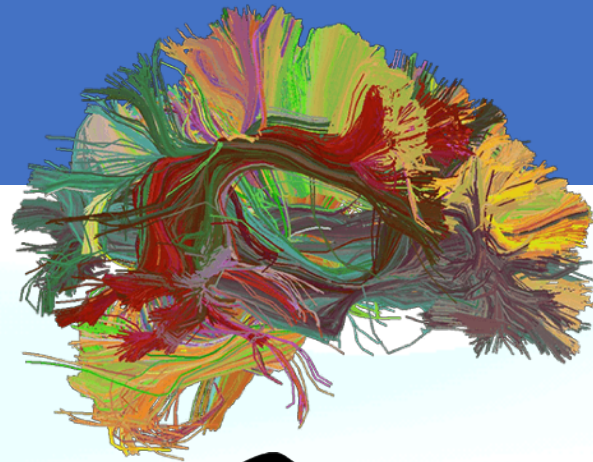
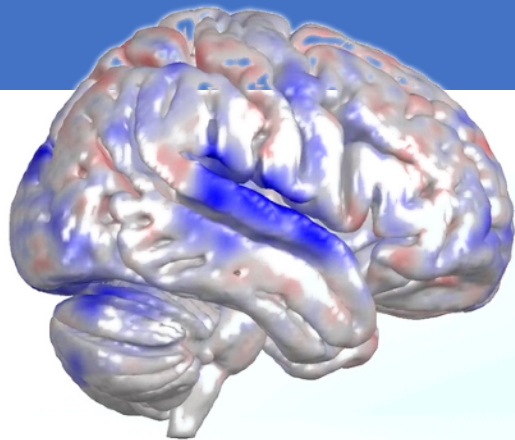


TLC-CIMDU - *Giornata della Didattica Innovativa 2026*, Sala delle Capriate - Steri 12 gennaio 2026

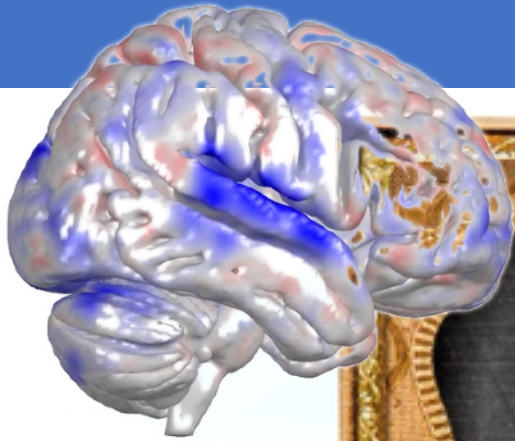
Obiettivi: PBL del PBL!



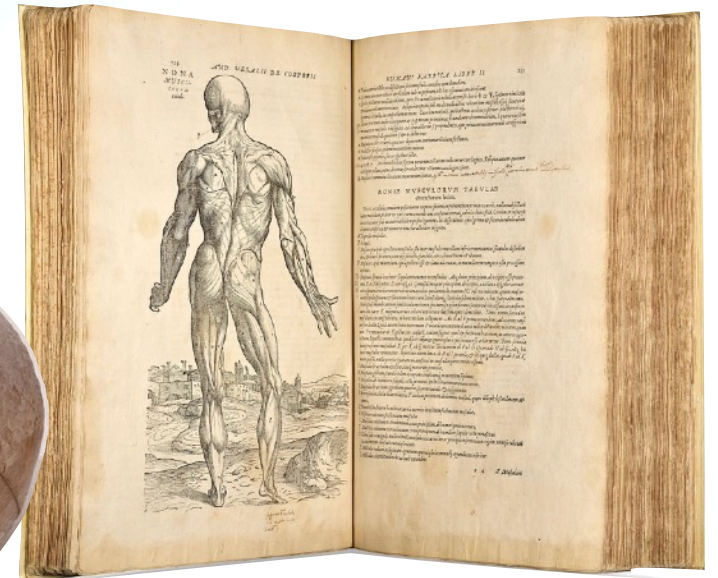
Obiettivi: PBL del PBL!



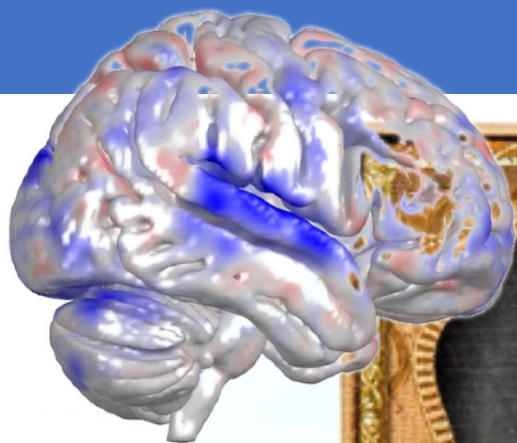
Obiettivi: PBL del PBL!



HARVARD
COUNTWAY LIBRARY



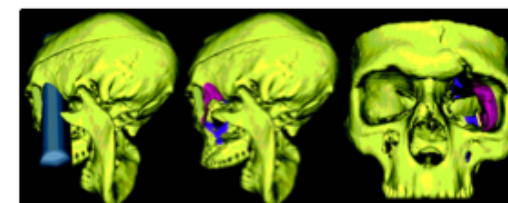
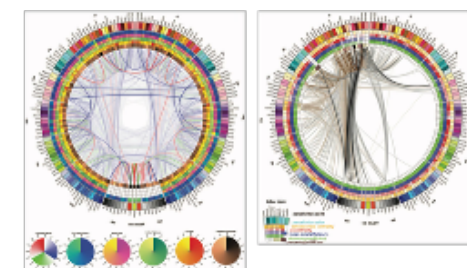
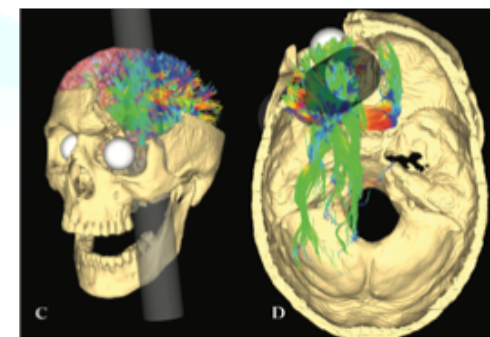
Obiettivi: PBL del PBL!



HARVARD
COUNTWAY LIBRARY

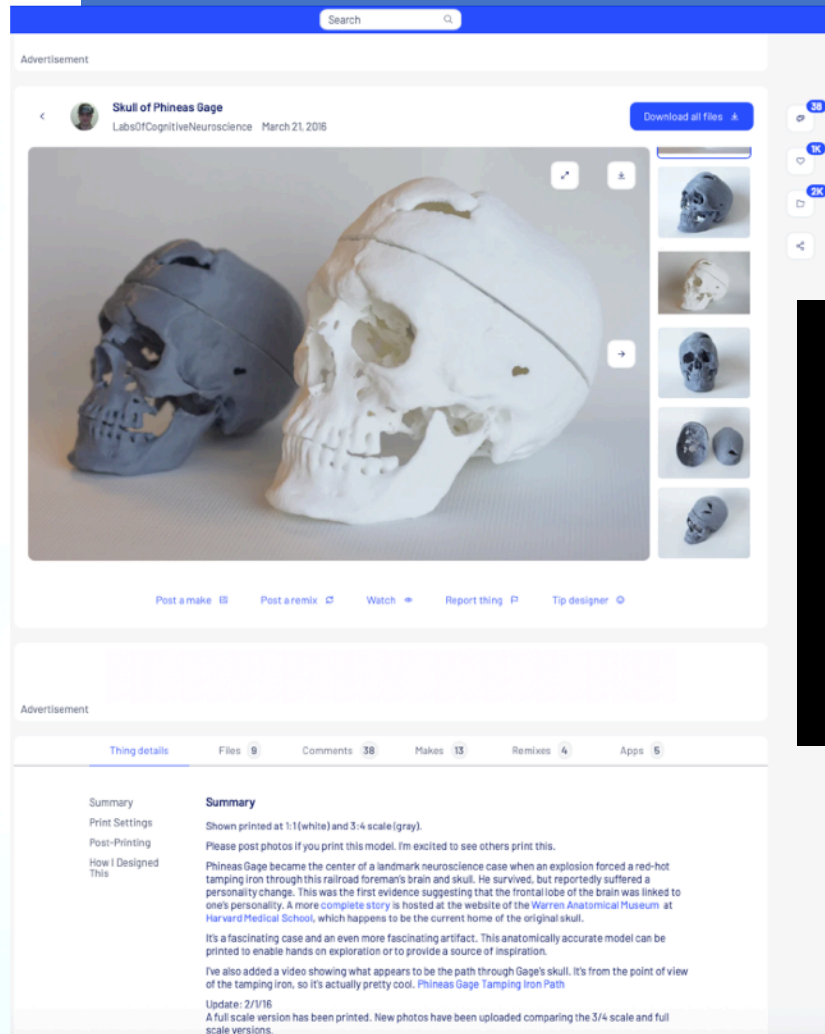


Van Horn et al, 2012

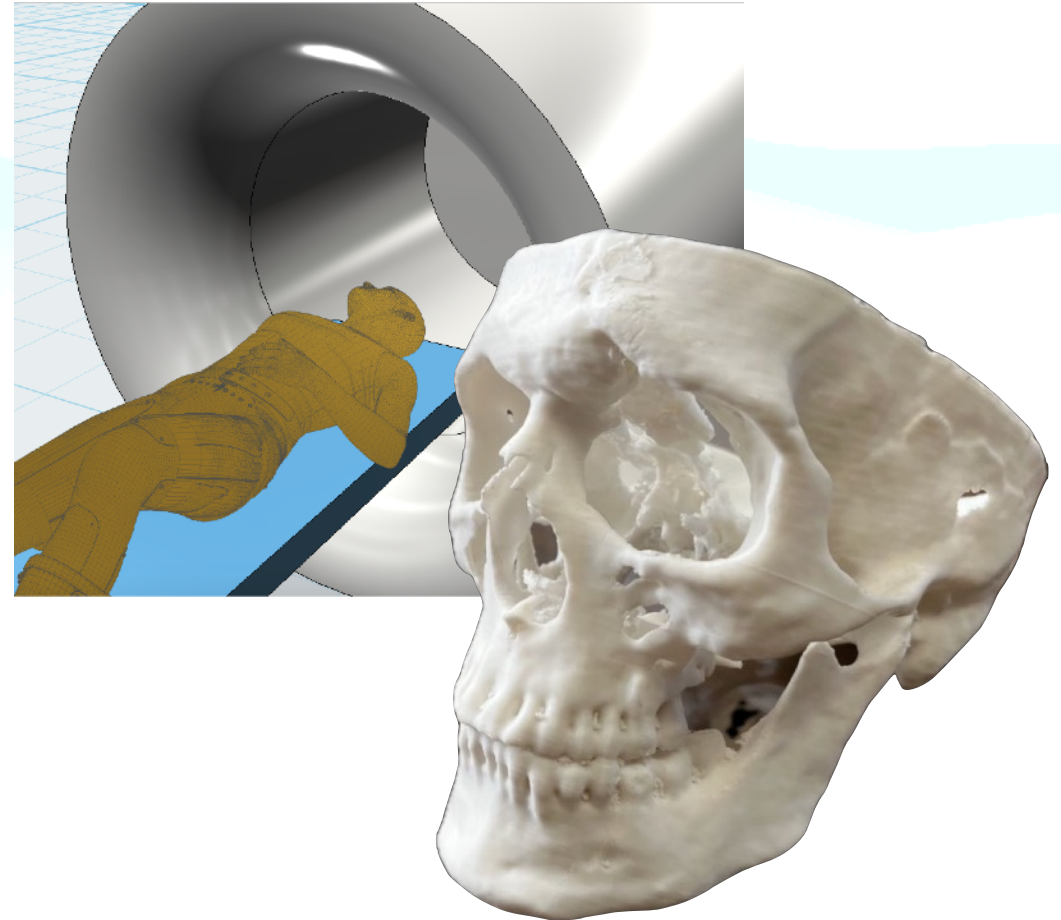
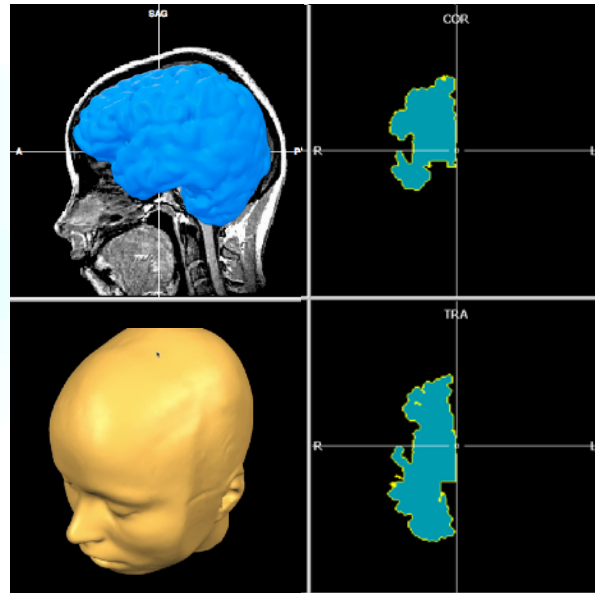
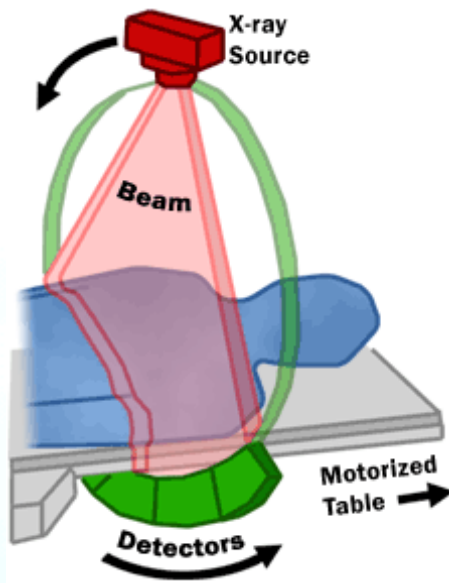


Ratiu et al, 2014

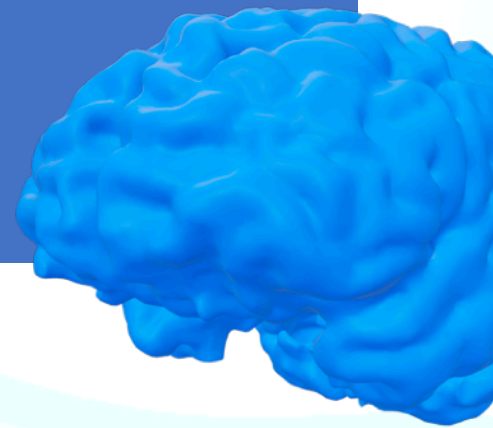
Metodi



Metodi




Metodi



Università
degli Studi
di Palermo

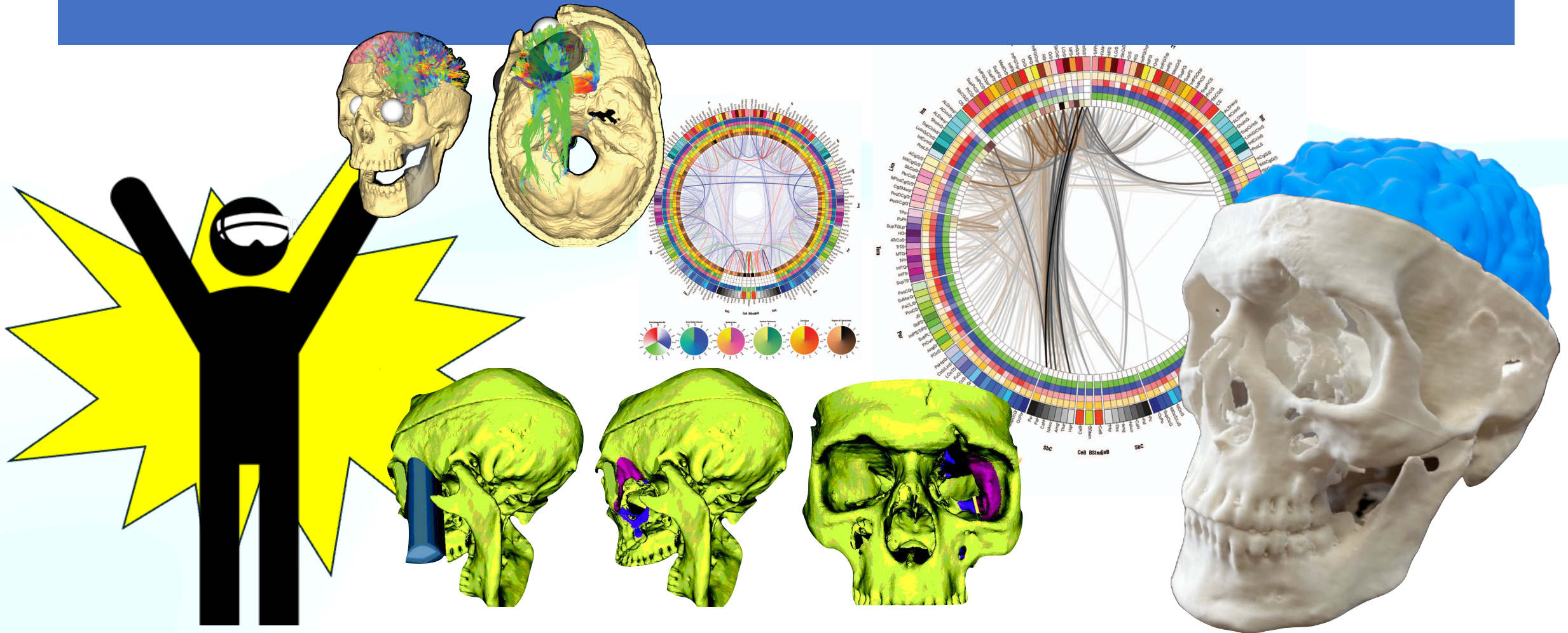


FASTWEB + vodafone



Cofinanziato
dall'Unione europea

Metodi



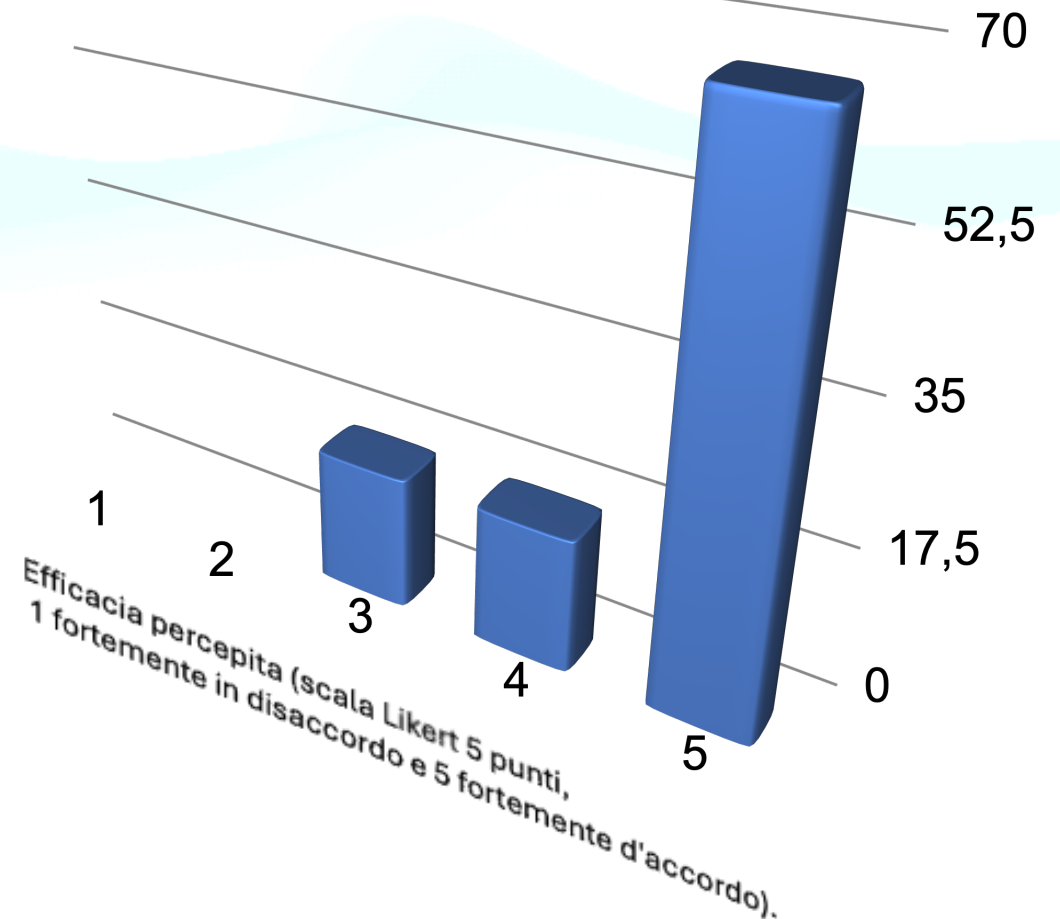


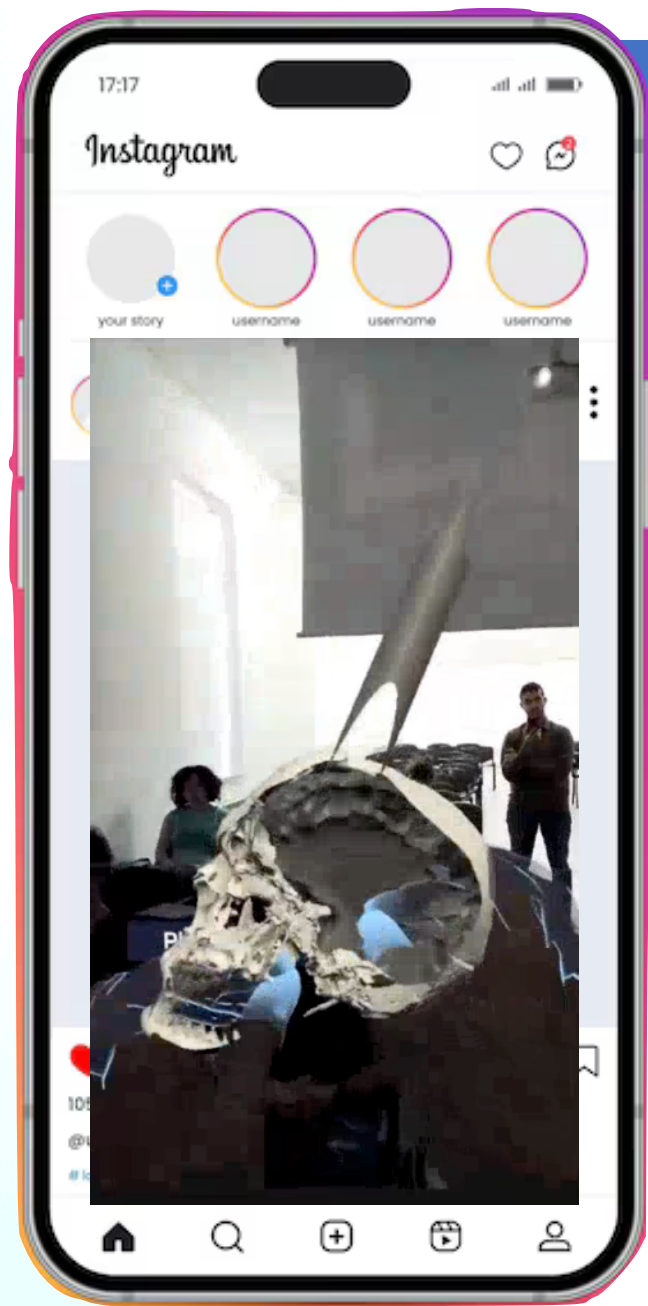
La partecipazione degli studenti



Risultati: vantaggi e svantaggi

E1: Questa lezione immersiva è stata più efficace di una lezione frontale sullo stesso argomento





Prospettive di apprendimento

