



Ingegneria
Gestionale
Palermo

MASTER OF SCIENCE IN MANAGEMENT ENGINEERING

2021_2022

Department of Engineering
Università degli Studi di Palermo



**Università
degli Studi
di Palermo**



Key facts



FORMAT

2 years – Full time



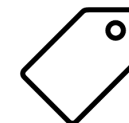
PLACE

Palermo



SELECTION PROCEDURE

Students will be selected based on their previous academic curriculum



FAMILY OF DEGREE

LM-31



DEPARTMENT

Department of Engineering



LANGUAGE

English



DEGREE PROGRAMME DIRECTOR

Manfredi Bruccoleri



Università
degli Studi
di Palermo



dipartimento
di ingegneria
unipa

PROGRAMME PROFILE

MSc IN MANAGEMENT ENGINEERING

INTEGRATING HIGH-LEVEL MANAGEMENT SKILLS WITH TECHNICAL COMPETENCES TO DEAL WITH SYSTEMATIC PROBLEMS CHARACTERIZING THE EVERY-DAY LIFE OF A COMPANY

The 2nd cycle degree programme in [Management Engineering](#) trains engineering professionals able to cover high-level management roles to meet today's business challenges with innovative solutions

The programme integrates [high-level management skills](#) with [in-depth technical competences](#) and enable students to deal with [complex problems](#) in [several areas](#) such as supply chain management, finance, economics, innovation, production, logistic and technology management

ADMISSION REQUIREMENTS

CURRICULAR REQUIREMENTS

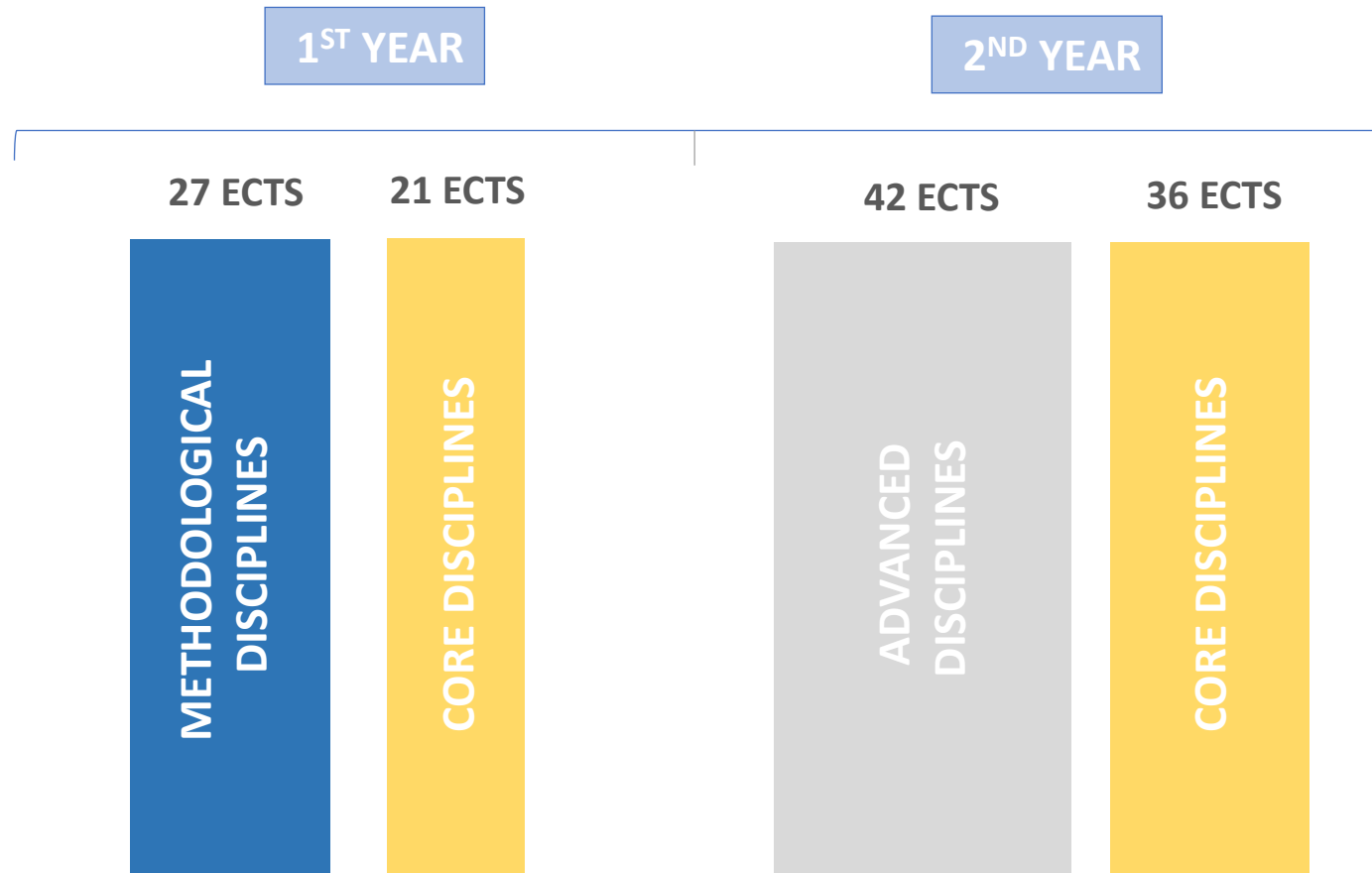
Candidates must have a **bachelor** degree in **Engineering**

Candidates must also have **basic knowledge** in the following areas:

- ✓ Statistics
- ✓ Operations/Production Management
- ✓ Business
- ✓ Economics

ADMISSION TEST IS NOT REQUIRED

MASTER STRUCTURE

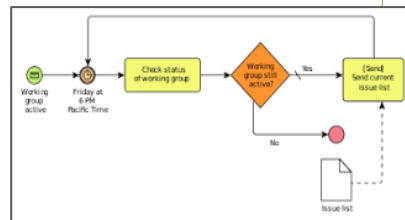
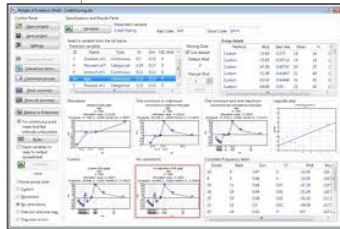


120 ECTS in 2 years

- Other activities 9 ECTS
- Stage and internship 6 ECTS
- Master thesis 15 ECTS

MASTER STRUCTURE

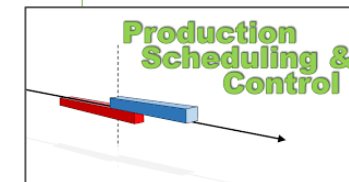
Methodological disciplines



Core disciplines



Advanced disciplines

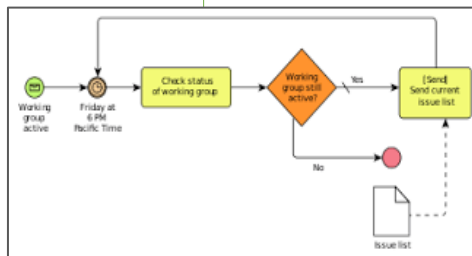
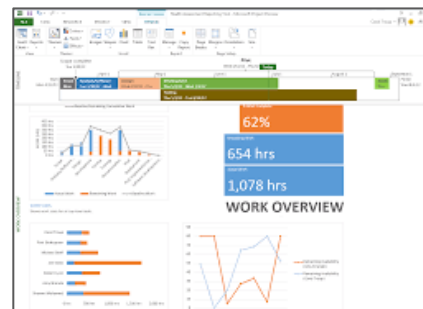
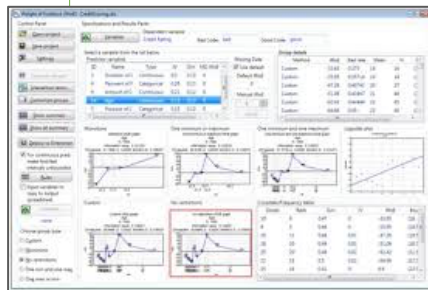


SOFT SKILLS

MASTER STRUCTURE

Methodological disciplines

- Advanced statistical methods for management engineering
- Business process management
- Project management



MASTER STRUCTURE

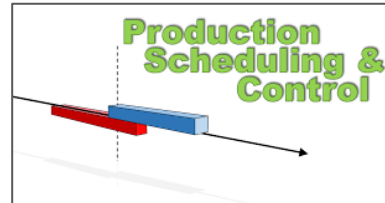
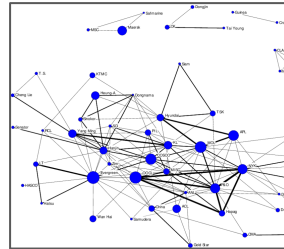
Core disciplines



- Supply Chain
- Human Resource
- Corporate finance
- Marketing
- Strategy
- Innovation
- Service Quality

MASTER STRUCTURE

Advanced disciplines



- Production operational planning
- Sustainable production technologies
- Public sector economics
- Social network
- Safety management

INTERNATIONALIZATION

MOBILITY OPPORTUNITIES ERASMUS+ PROGRAMME

International exchanges with over **20 institutions** are available to students. Every year over **65%** of **engineering students** go abroad

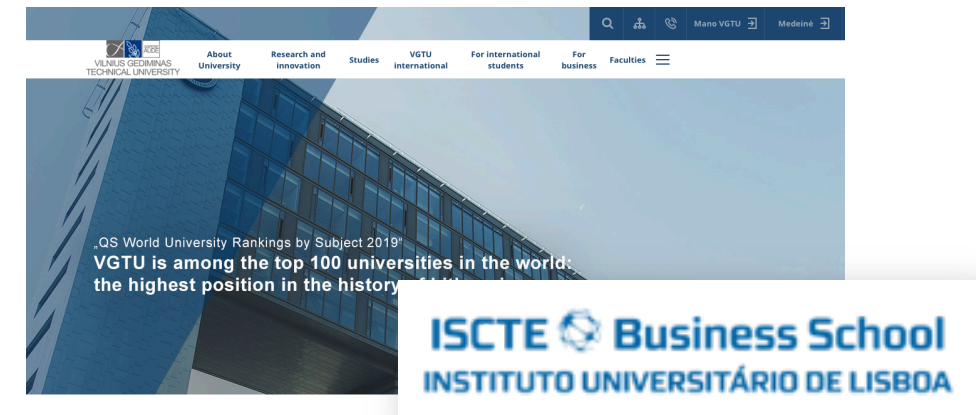
Erasmus Programme's **partners**:

- Fachhochschule Suedwestfalen (Germany)
- Universida de Lusíada (Portugal)
- Linkoping University (Sweden)
- Chalmers University of Technology (Sweden)
- Universidad de Sevilla (Spain)
- Lappeenranta University of Technology (Finland)
- ...

INTERNATIONALIZATION

MOBILITY OPPORTUNITIES DOUBLE DEGREES

The Management Engineering course offers **two international double degree programmes**. The double degree programmes provide an important international experience and allow students to earn in just two years a double degree, both from the UNIPA and from the partner University.



PLACEMENT

employed

97,7 % 1 years after graduation

time

4,8 average months

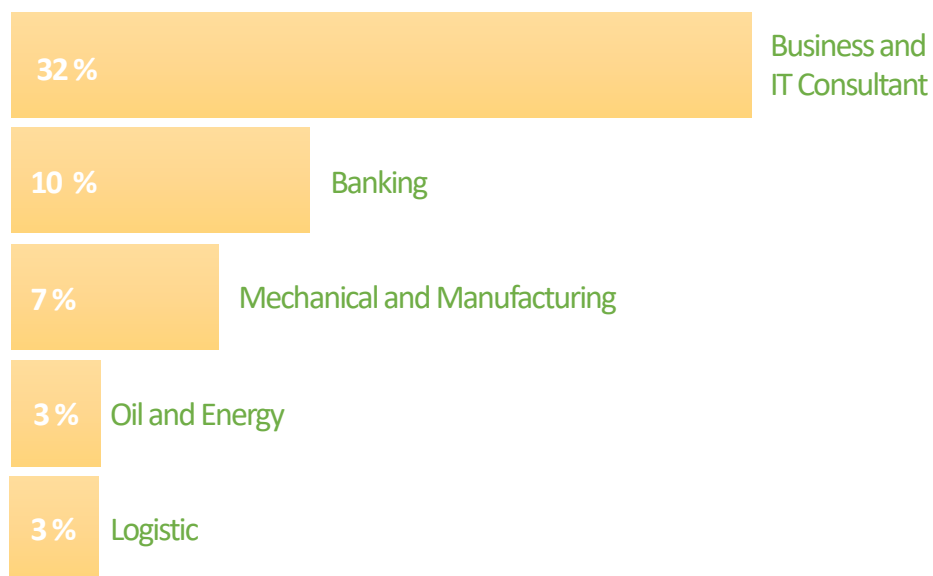
[source: ALMALAUREA 2019]

PLACEMENT

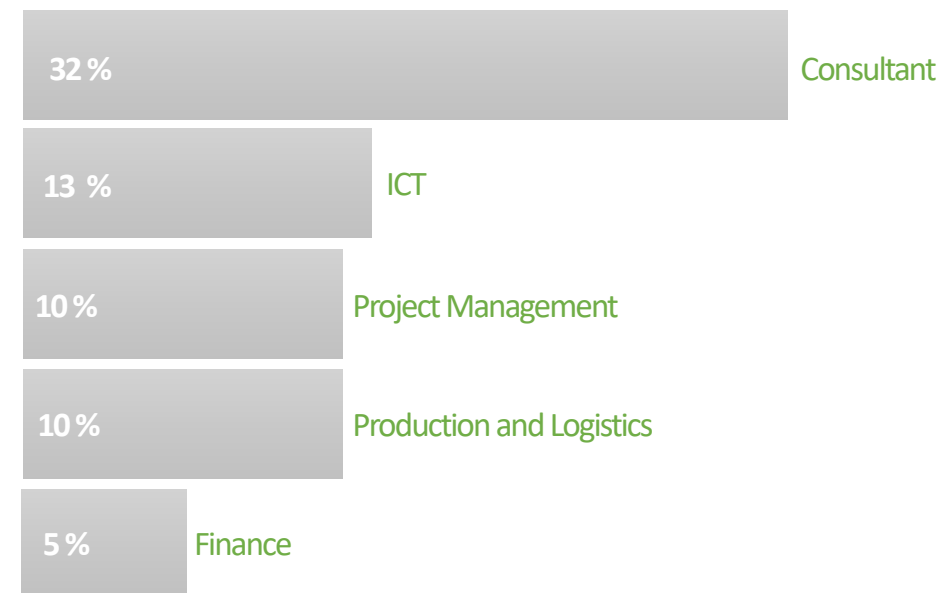
CAREER OPPORTUNITIES

Graduates find employment in **several sectors** and work basically in all **company's areas**

FIRST 5 SECTORS



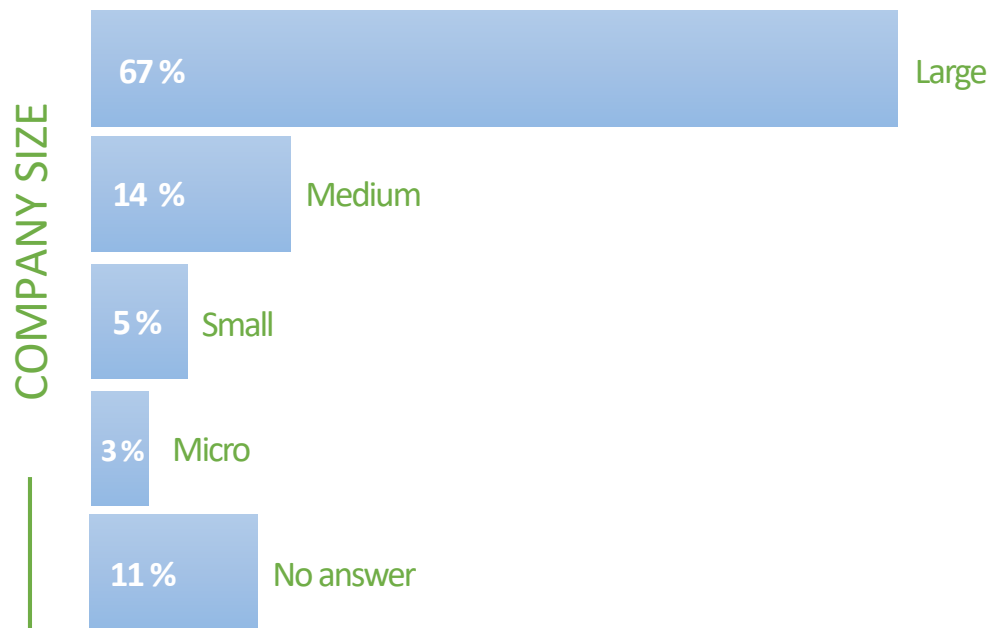
FIRST 5 AREAS OF COMPETENCES



PLACEMENT

CAREER OPPORTUNITIES

Graduates find employment especially in **big companies**



ALUMNI



Silvia Chiapparrone

EMEA Shopping Ads Product Lead –
Go To Market@ **Google**



Luca Cinquemani

Manager at **Porsche** Consulting

Discover Silvia and Luca' s experience here >



CONTACT



email

Manfredi Bruccoleri – Coordinatore del Corso di Laurea
manfredi.bruccoleri@unipa.it

Erica Mazzola – Delegato all'orientamento del Corso di Laurea
erica.mazzola@unipa.it



phone

Manfredi Bruccoleri [+39 09123861836](tel:+3909123861836)
Erica Mazzola [+39 09123861818](tel:+3909123861818)



website

www.unipa.it/gestionale



Ingegneria
Gestionale
Palermo

MASTER OF SCIENCE IN MANAGEMENT ENGINEERING

2021_2022

Department of Engineering
Università degli Studi di Palermo



**Università
degli Studi
di Palermo**

