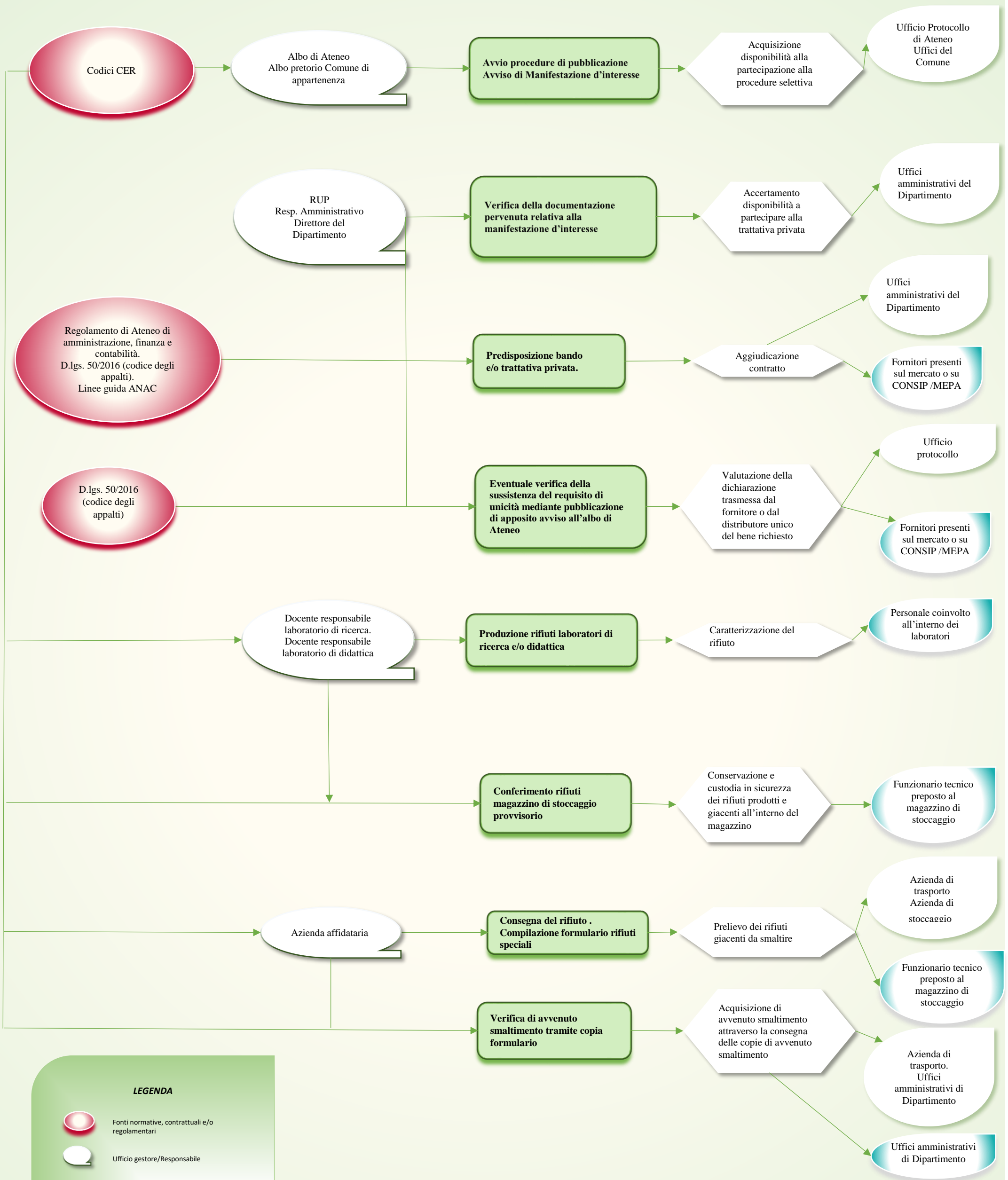








GESTIONE RIFIUTI SPECIALI



LEGENDA

-  Fonti normative, contrattuali e/o regolamentari
-  Ufficio gestore/Responsabile
-  Fase/Attività
-  Oggetto della fase/attività (cosa?)
-  Altri uffici/soggetti interni ed esterni coinvolti fase/attività (con chi?)
-  Destinatari interni ed esterni fase/attività (a chi?)